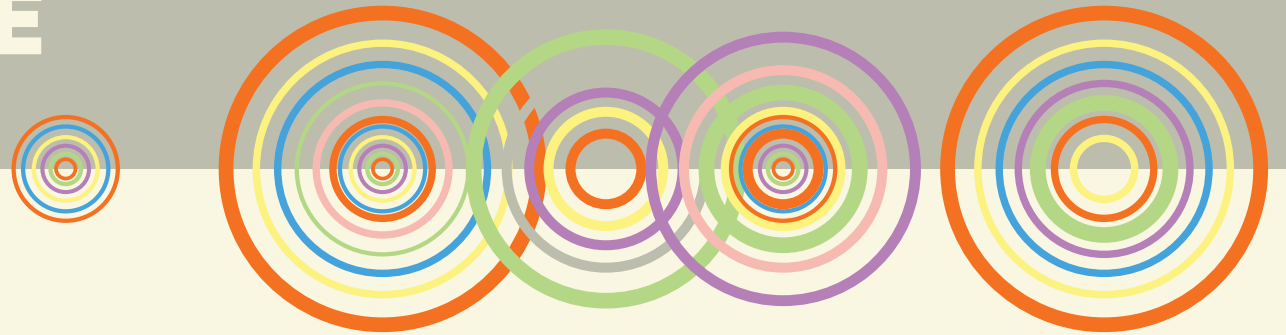


# SOUTHEAST BELLEVUE TRANSMISSION LINE

➤ June 2026 ➤



# PROJECT RECAP

## BELLEVUE RELIABILITY PROJECT

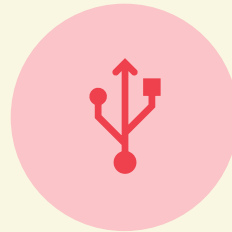
OPPD is upgrading transmission, substation and distribution systems in Bellevue to create more resilience and reliability for the community and to pave the way for planned business growth.



INVESTMENT IN INFRASTRUCTURE TO **SUPPORT GROWTH** IN SOUTHEAST BELLEVUE, INCLUDING THE NEW GOOD LIFE DISTRICT.

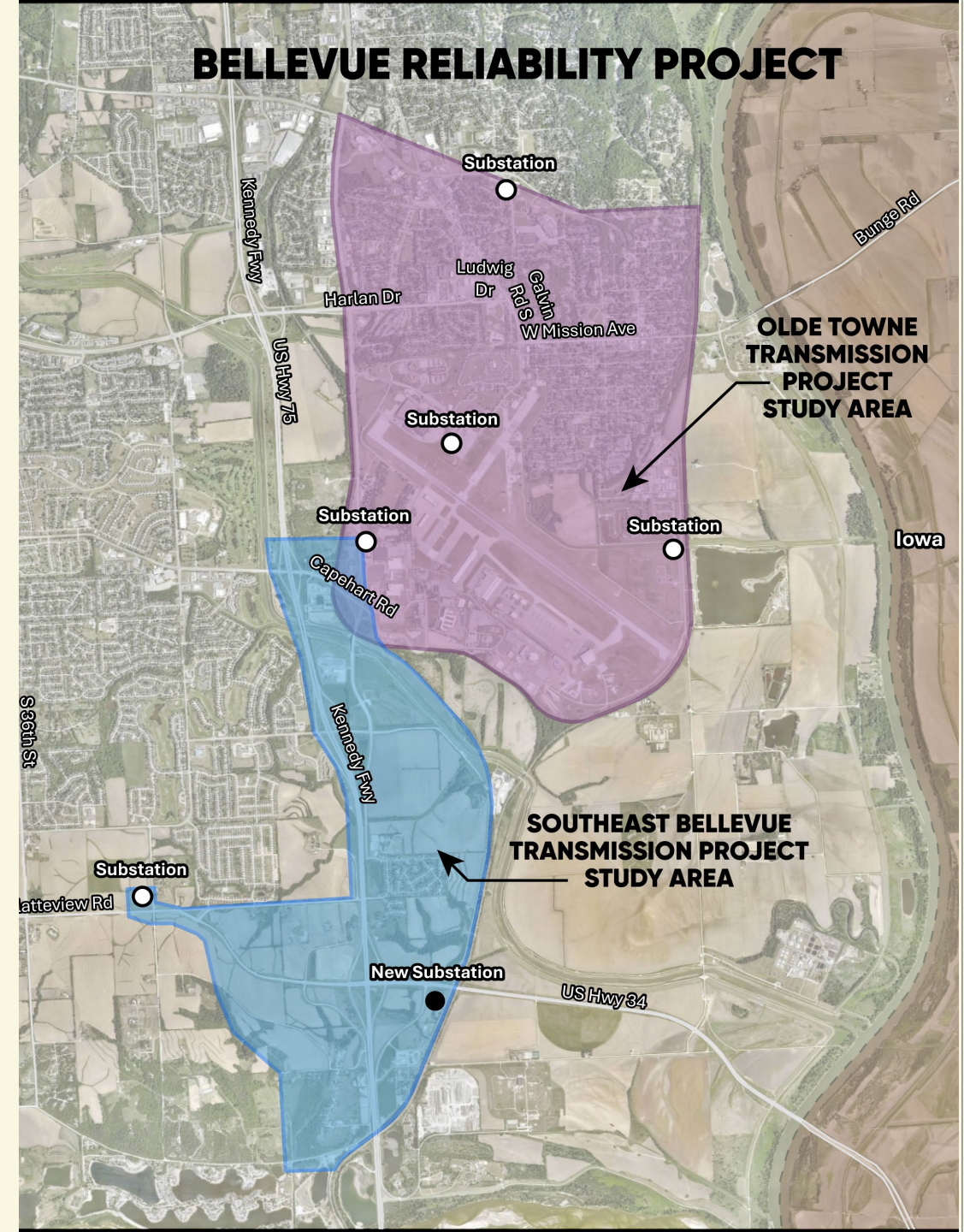


CREATING LONG-TERM SOLUTIONS TO **ADDRESS SYSTEM VULNERABILITIES** IDENTIFIED IN THE 2019 FLOOD.



**UPGRADES & REBUILDS** AGING AREAS OF OPPD SYSTEM

More information: [www.oppdcommunityconnect.com/bellevue](http://www.oppdcommunityconnect.com/bellevue)

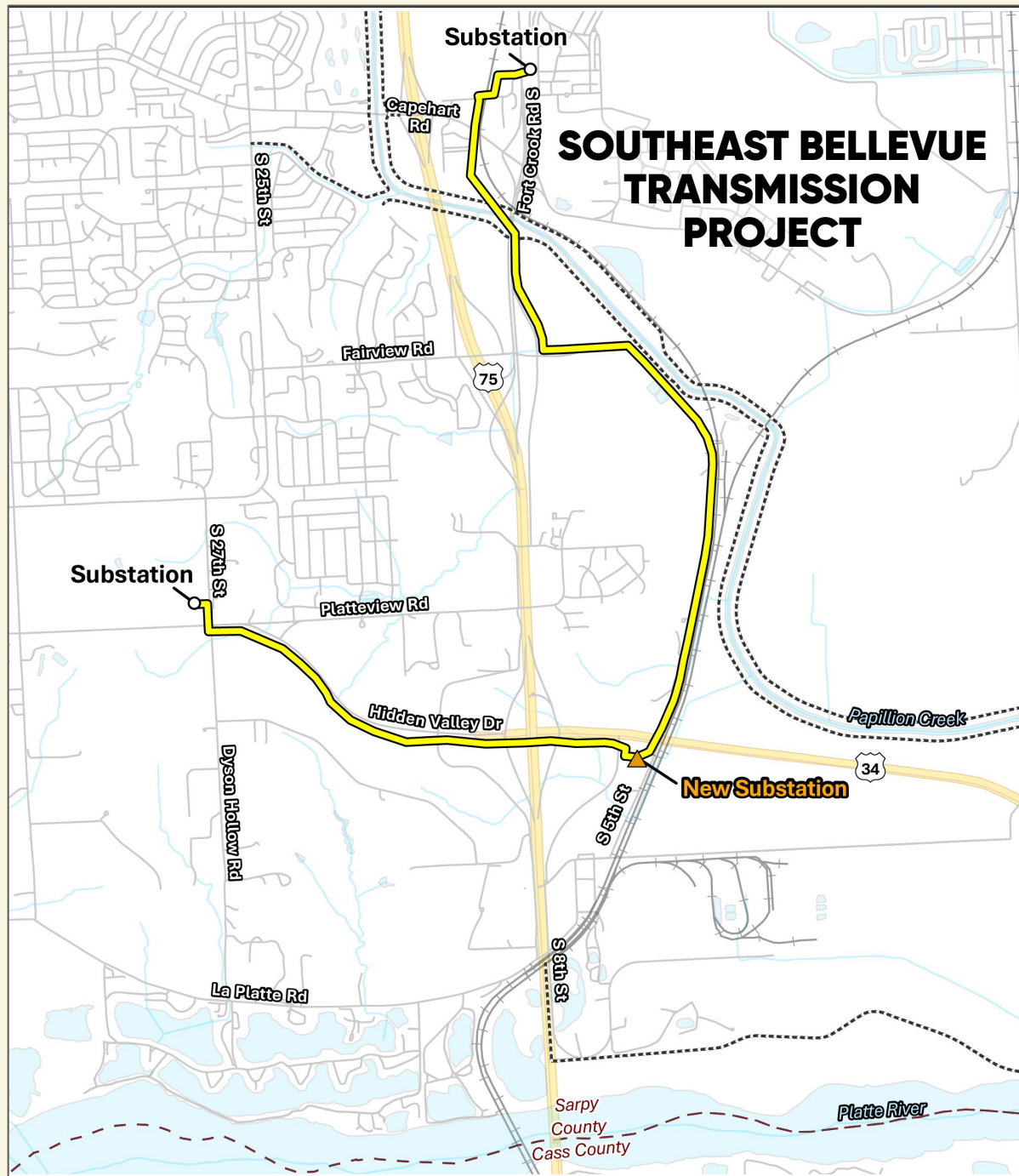


# FINAL ROUTE

## SOUTHEAST BELLEVUE TRANSMISSION ROUTE

### PUBLIC PARTICIPATION AND DECISION

- 6 public events, including local leader sessions, webinar, open houses
- 1,200 visits project webpage; 524 invitations to open house, with 19 attendees
- Consistent feedback to prioritize routes within established infrastructure
- Final route minimized impacted landowners, planned economic development and avoided potential environmental concerns
- Line proximity to levy requires U.S. Army Corp of Engineers coordination



# WHAT'S NEXT

## SOUTHEAST BELLEVUE TRANSMISSION PROJECT



Q3 2026  
& 2027

Landowner engagement  
Engineering design

2027

Q1-Q3: Easement acquisitions  
Q3-Q4: Distribution construction

2028

Transmission construction  
Q4: Line energized

**Olde Towne Segment:**

**Routing:** Summer 2026

**Final Route:** November 2026

**Energize:** Q2 2029