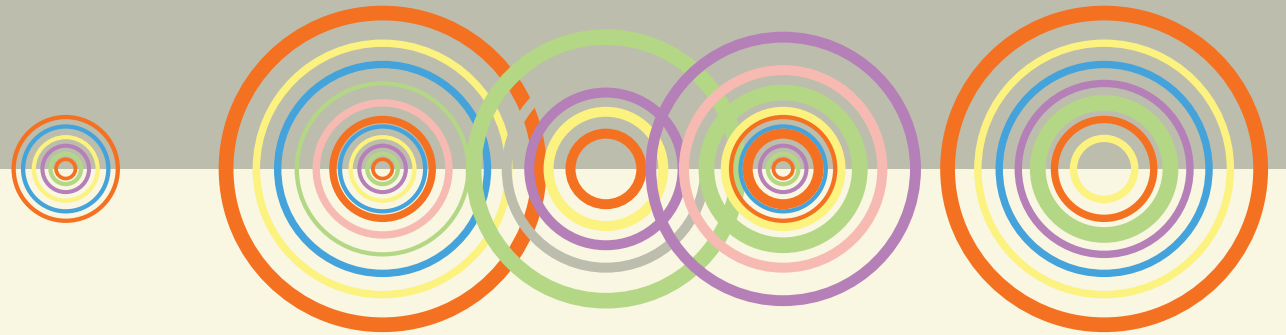


# NEW GENERATION & TRANSMISSION UPDATE

▶ 05.19.26 ▶

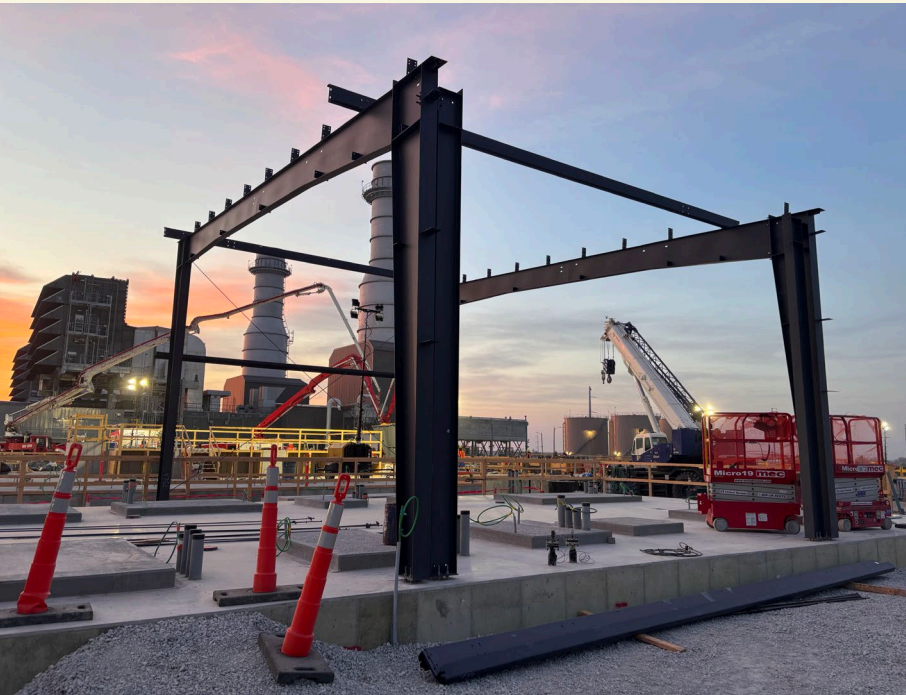


All Committee Meeting  
May 19, 2026

# AGENDA

- Generation Update
- Transmission and Substation Update
- Renewables and Storage Update
- North Omaha Station Update

# PROGRESS: NEW GEN



➤ The compressed air building begins to take shape. The air is used for multiple purposes to run plant.

Combustion Turbine and gantry crane set up for final move into place. ➤



● Budget  
● Schedule  
33% complete



Q2 2026

## Turtle Creek Station

- Expansion work is officially going vertical.
- Turbine has been placed on the pedestal.
- Concrete pours for the stack and the maintenance building occurred in early April.

### KEY WINS

- **Schedule:** Kiewit continues to make good progress, staying slightly ahead of schedule.
- **Equipment:** The spare generator step-up transformer has been set on site.
- **Safety Culture:** Strong focus on safety, additional tornado shelters delivered.

# PROGRESS: NEW GEN

Q2 2026

## Cass County Station

- Water Treatment Building is fully enclosed and interior work underway.
- Fuel Oil Building steel erection started.
- Preparing for mud mat pour for Unit 3 combustion turbine.
- Night shift started for pipe work.

Budget

Schedule

30%  
complete



## KEY WINS

- Kiewit completed one year with **no reportable safety incidents.**
- Bringing on specialized subcontractor to **double size of pipefitter craft**, addressing underground piping delays
- Successful **coordination with OPPD** on site maintenance outages
- **Ahead of schedule** on overall construction



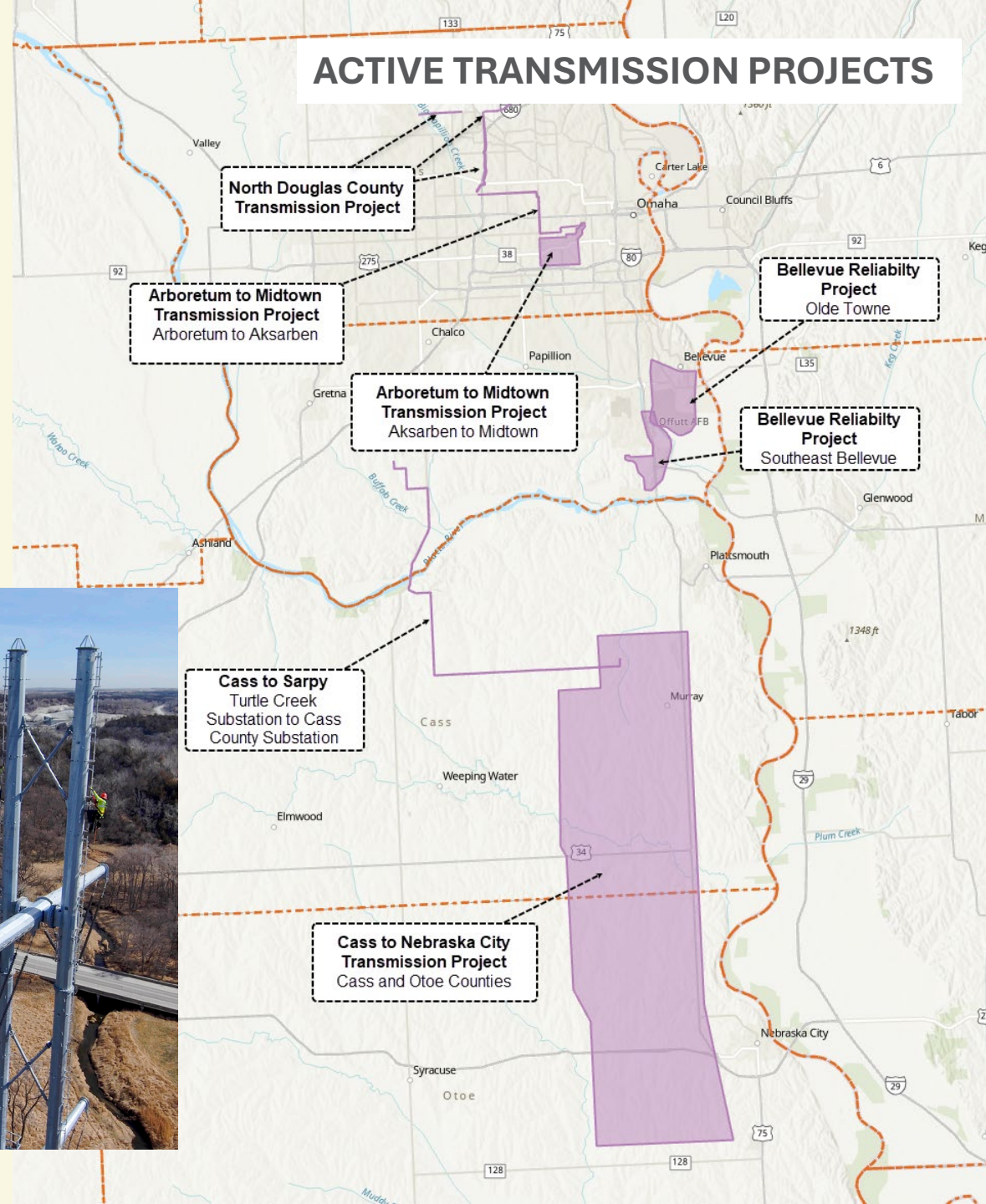
# TRANSMISSION & SUBSTATION

Q2 2026

- Cass-to-Sarpy T-Line**
  - 130 foundations (63%) and 88 structures (44%) complete.
  - Transmission line stringing underway.
- North Douglas County T-Line**
  - Distribution construction underway on Segment 3 with transmission beginning in June. Stringing Segment 1 is underway.

Budget

Schedule



## KEY WINS

- Piloted **virtual open house** for the Arboretum to Midtown Transmission Project.
- **Announced reduced network** for the Southeast Bellevue Transmission Project; seeking public feedback on the reduce route network.
- Hosted **12 meetings** year-to-date to engage local leaders and public on planning for new transmission routes.
- Assembly complete on **river-crossing structures**.
- Routing expected to kick off by end of year for **three more transmission projects**, including JTIQ.



# PROGRAM RISKS



Outage Management



Materials Management

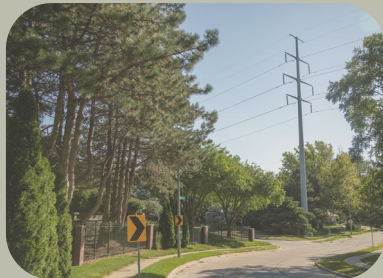


Global Instability



Program Scale and Complexity

## TRANSMISSION



Public sentiment: Two active transmission projects plus a generation project in Cass County.



Supply Chain: Delayed deliveries being monitored for potential scheduling impacts

## GENERATION



Turtle Creek Station construction activity – road construction, small footprint



Supply Chain: Two Cass County GSUs delayed because of Panama Canal congestion

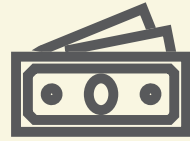
# RESULTS: ENGINEERING CERTIFICATE

OPPD Board Resolution 6709 – Transmission and Substation Contract Alliance – Engineer’s Certificate to Negotiate (Approved May 15, 2025)

*TaSCA is allowing OPPD to move more quickly in a tight labor and resource environment, creating certainty around resourcing, predictability for costs and agility in scheduling work.*



Allowed **direct awards** on North Douglas County Transmission Project, providing work continuity, efforts to accelerate work and safety



Established **standardized pricing** for typical transmission structures, supporting both major projects and seasonal work



Allowed for **seamless scheduling** for underground distribution work on both Cass to Sarpy and North Douglas County T-Line Projects

3

UPCOMING RFPs

2

CONTRACTS

1

UPCOMING DIRECT  
AWARD

\$3.6

SPEND  
(in millions)



# ➔ RENEWABLES AND STORAGE UPDATE

# PIERCE COUNTY ENERGY CENTER

## PROJECT OVERVIEW & STATUS

### Project Nameplate Capacity

- Solar: 420 MW
- Energy Storage: 170 MW

**Location:** Pierce County, Nebraska

**Developer:** NextEra Energy Resources

**Estimated Commercial Online Date:** May 2027

Enhanced structure providing an optimized partnership among OPPD, Google and NextEra Energy Resources

### Contingent items include:

- Firm network transmission service study

### Construction activity progress

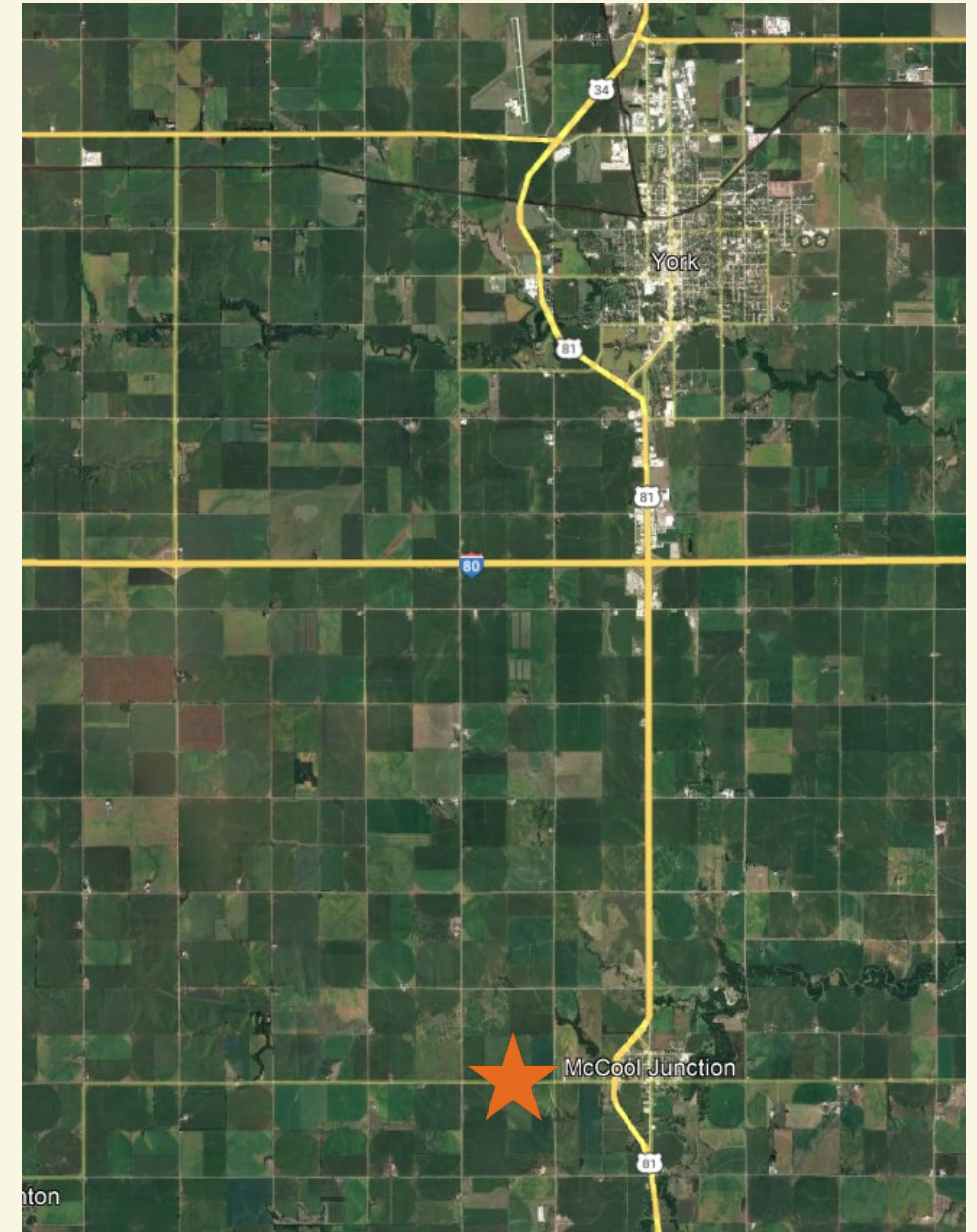
- County road construction: 100%
- Site grading: 100%
- Racking installation: 70%
- Panel installation: 60%
- Substation grading: 50%



# K-JUNCTION SOLAR

## Project Overview & Status

- The York County Board has been reviewing solar regulations since before OPPD acquired K Junction in 2023.
- The Board approved highly restrictive regulations in April 2026.
- OPPD allowed the Generation Interconnection Agreement to expire due to schedules required therein that can no longer be met due to delays in regulation development.
- Project Team continuing to evaluate viable paths forward and exploring future partnerships to develop project.



★ General solar facility location

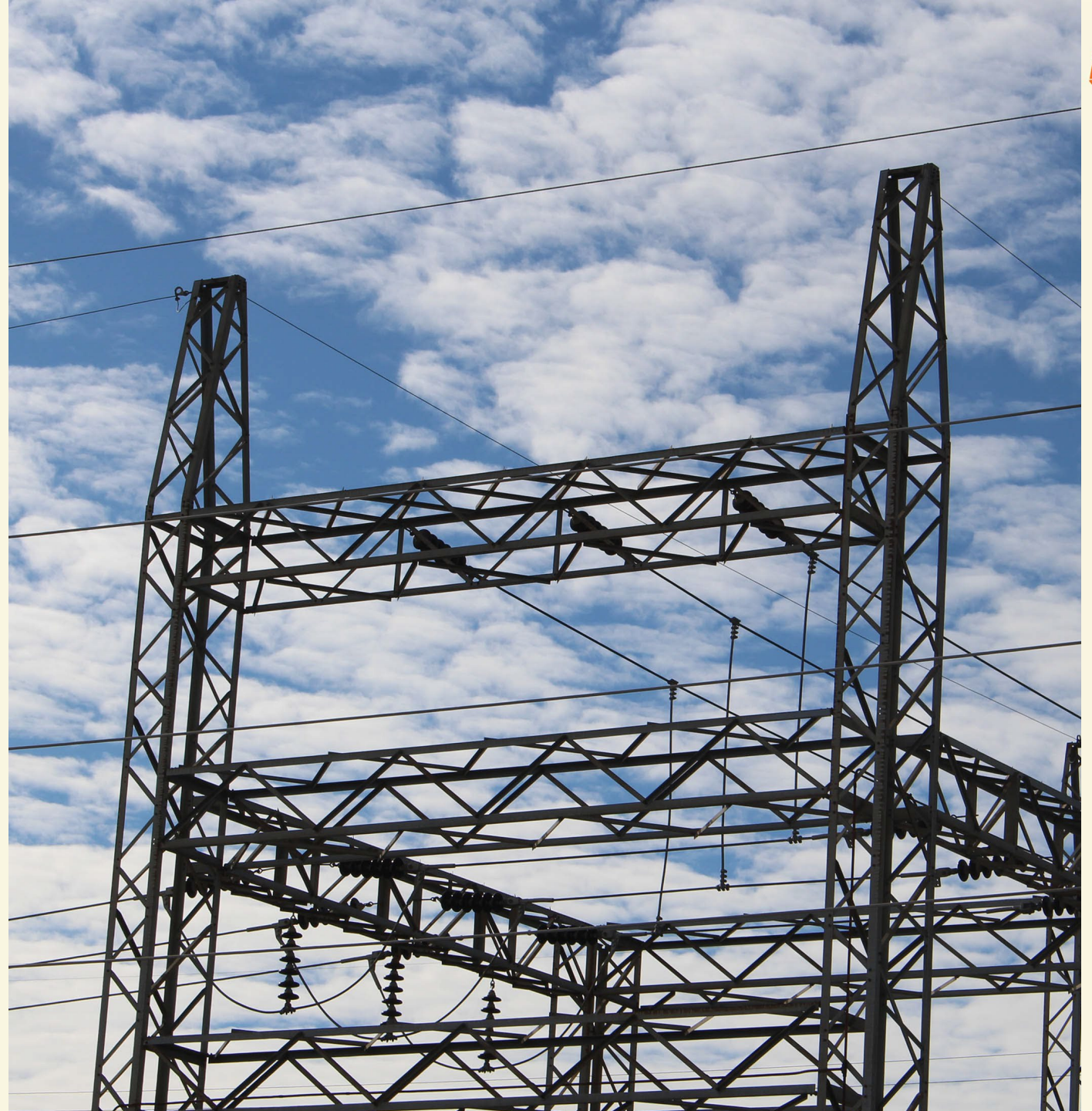
# ➔ **NORTH OMAHA STATION UPDATE**

# ADDITIONAL UPDATES: NORTH OMAHA STATION

- In late Dec 2025, OPPD received the FERC approved Southwest Power Pool (SPP) generation interconnection agreements as outlined in Board Resolution 6518.
- In accordance with Board Resolution 6744, OPPD initiated the SPP transmission tariff study in Jan 2026. SPP anticipates the study will be completed by the end of 2026.
- This SPP-led study will inform any transmission investments needed to retire North Omaha units 1-3 and refuel units 4 & 5.
- The District's 2026 Integrated System Plan will assume the NOS refuel/retirement and will consider SPP's study requirements to prioritize necessary investments. The ISP will be completed by the end of 2026.
- Management will provide updates as these studies progress.



Substation equipment outside of  
North Omaha Station



» **QUESTIONS?**

