

# NEW GENERATION & TRANSMISSION UPDATE

➤ 08.19.25 ➤



All Committee Meeting  
Aug 19, 2025



# AGENDA

- Generation Update
- Transmission and Substation Update
- Engineer's Certificate Update
- North Omaha Station Transition Project
- Renewables and Storage

# PROGRESS: NEW GEN



Q3 2025

## New Gen Projects

### Cass County Station (CCS)

- Well drilling, entry road, and tank area under construction

### Turtle Creek Station (TCS)

- Excavating began mid-July for Unit 3



## KEY WINS

- **Fast pace:** 3,600-plus engineering drawings, specs and documents submitted since projects launched
- Cass County and Turtle Creek Station **air permits** approved **five weeks ahead of schedule**
- Spare **CCS** generation step-up transformer and **TCS** gas turbine on track for delivery by year-end.



## Site work at Cass County Station



- Budget**  Small variance between budget and accruals. Monitoring risks.
- Schedule**  On track but continuing to identify ways to add float to schedule.

**Turbine for Turtle Creek Station Unit 3 is fully bladed and in final assembly.**



# TURTLE CREEK STATION

2

TURBINES

450

MW

52

MW/MINUTE  
RAMP/UNIT

72

HRS OF FUEL  
STORAGE



**NOVEMBER 2019**

OPPD Board of Directors approves two new generation station and a utility-scale solar facility



**SEPTEMBER 2020**

OPPD announces Sarpy County location for new plant

**MAY 2021**

OPPD contracts with Siemens for two F-class dual-fuel combustion turbines



**AUGUST 2021**

Site grading begins

**MAY 2021**

Construction begins

**FALL 2022**

Turbines and major equipment are delivered to site



**MAY 2024**

First high-voltage power feed established to plant.

**NOVEMBER 2024**

Testing begins – first fire on units



**JUNE 2025  
COMMERCIAL OPERATIONS**

# PROGRESS: TRANSMISSION & SUBSTATION



Q3 2025

## Cass-to-Sarpy T-Line (CSTP)

- Sealed bids received for Transmission construction with 9 contractors vying for the project

## North Douglas County T-Line (NDCTP)

- Public Hearing slated for August 5<sup>th</sup> for Segments 2 & 3

## KEY WINS

- Key **permit secured in 10 days** for CSTP, significantly ahead of schedule
- CSTP **Distribution construction** has begun, using transmission easements to minimize community impact (pictured at right)
- Received and accepted Notice to Construct (NTC)** from SPP for the 100-mile JTIQ transmission line projects focused on the seam between SPP and MISO
- Accelerated** NDCTP schedule by six months to address customer needs



7

PROJECTS IN  
SCOPING /  
INITIATION PHASE

7

PROJECTS IN ENG/  
ROW/PERMIT  
PHASE

184

MILES OF  
TRANSMISSION

## SCHEDULE



All projects are on track or ahead of schedule but challenged with long material lead times.

## BUDGET



Project cost increases due to steel, materials, and construction cost increases.





# ENGINEER’S CERTIFICATE

*OPPD Board Resolution 6709 – Transmission and Substation Contract Alliance – Engineer’s Certificate to Negotiate (Approved May 15, 2025)*

## North Douglas County Transmission Project

- Purchase of **7.75 miles** of wire through expedited RFP
- Required due to **spike in lead times** (30 weeks to 92 weeks)
- Purchase was **cost neutral**, and **prevented schedule delays**

## Transmission and Substation Contract Alliance (TaSCA)

- RFQ **issued July 8** to 15 contractors
- **13 contractors** have indicated plans to bid
- Contractors include **medium to large** companies with **OPPD experience** as well as established **national** contractors

JULY	Contractor Q & A Session
AUGUST	Submissions Due
SEPT	Short list finalized for interviews

# PROCESS IMPROVEMENT AND EFFICIENCY



## ESTIMATES

- Implementing new methods for measuring and capturing inflationary factors on multi-year projects in cooperation with Supply Chain Management

## PRIORITIZATION

- Cost-cutting efforts elsewhere in OPPD has freed up staff to support some Major Project work

## STRATEGIC PARTNERSHIP

- Pushing efficiencies through dashboarding, streamlined meetings, role clarity

## ORGANIZATIONAL CHANGES

- Consolidating MPO and Project Management teams to further scale and align project work



# NORTH OMAHA PROGRESS

2025

Unit 4 –5  
Prep

Labor contracts  
Outage planning

Regulatory,  
compliance  
efforts

ELG Compliance project  
Intake screens upgrade  
SPP TCS/SBLS GIA receipt\*  
Air Permit application and  
public comment

Planned  
outages

Micro Outages: Units 4-5

2026

SPP approval NO1/2/3  
retirement\*

**Q4 Cease Coal Operations**

2027

## North Omaha conversion and retirement

Units 4 and 5 Conversion Outage Begins  
NO5 Burner replacement  
Aux Boiler (electrical)  
NO4 controls upgrade

\*Southwest Power Pool approval for new generation to fully inject power to the grid.



# **RENEWABLES AND STORAGE**

# PIERCE COUNTY ENERGY CENTER

## PROJECT OVERVIEW & STATUS

**Nameplate:** 420 MW Solar / 170 MW Storage

**Location:** Pierce County, Nebraska

**Developer:** NextEra

**Estimated COD:** 2027

### Unique Partnership between Google and OPD

1. Contingent items include:
  - Generation Interconnection Agreement
  - Firm Network Transmission Service Study
2. Construction activities
  - Q4 2024 – began county road construction, grading and other civil site work
  - Q2 2025 – began pile and racking installation

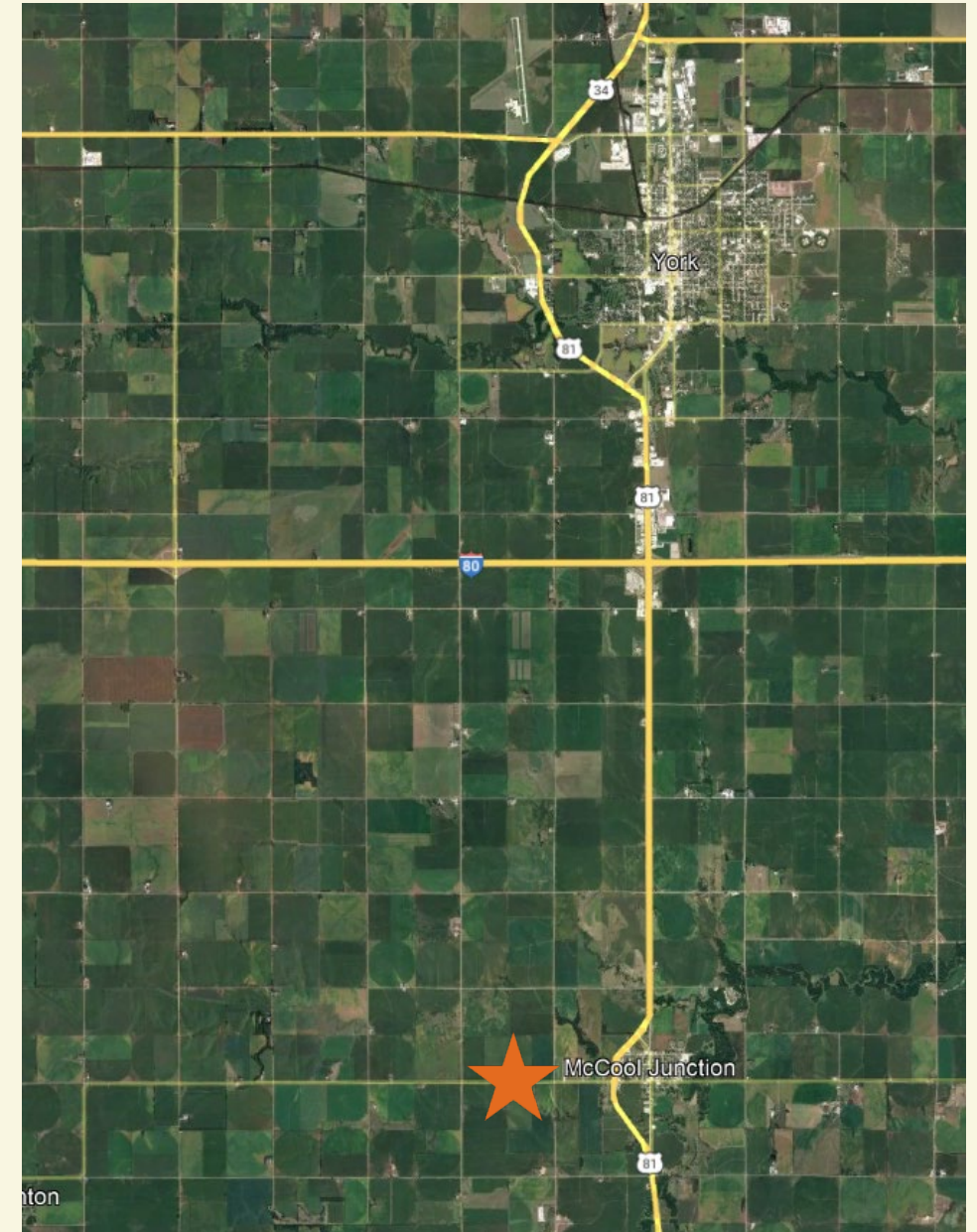


Pierce County Energy Center Inverter Pad

# K-JUNCTION SOLAR

## Project Overview & Status

- Generation Interconnection Agreement between OPPD, NPPD, and SPP effective August 2023
- OPPD support for York County to develop reasonable regulations.
- Timeline:
  - **July 2024:** County commissioners sent regulations to the Planning & Zoning Committee to re-develop
  - **Q3-4 2024:** County-hired consultant developed comprehensive plan and advice for solar regulations
  - **Feb. 2025:** Planning & Zoning Committee voted to send original regulations back to the County Commissioners with no changes
  - **April 2025:** County Commissioners rejected restrictive regulations
  - **Present:** County Commissioners continue to work through revisions to regulations
- Project Team advocating for reasonable regulations



★ General solar facility location



» **QUESTIONS?**