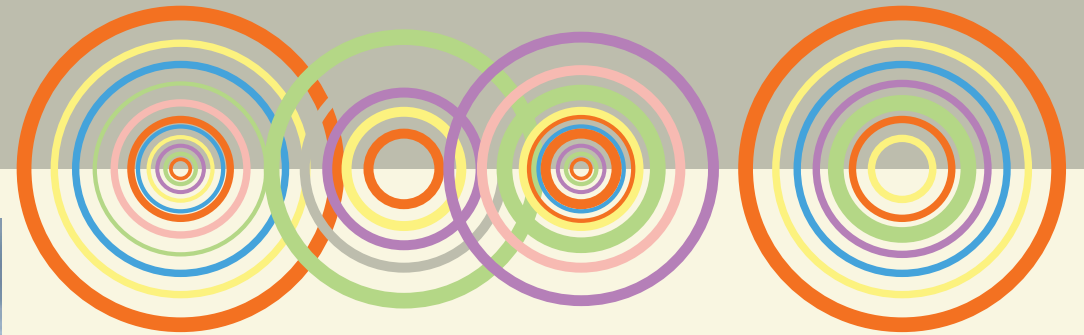


SCS AND JSS GENERATOR REWINDS

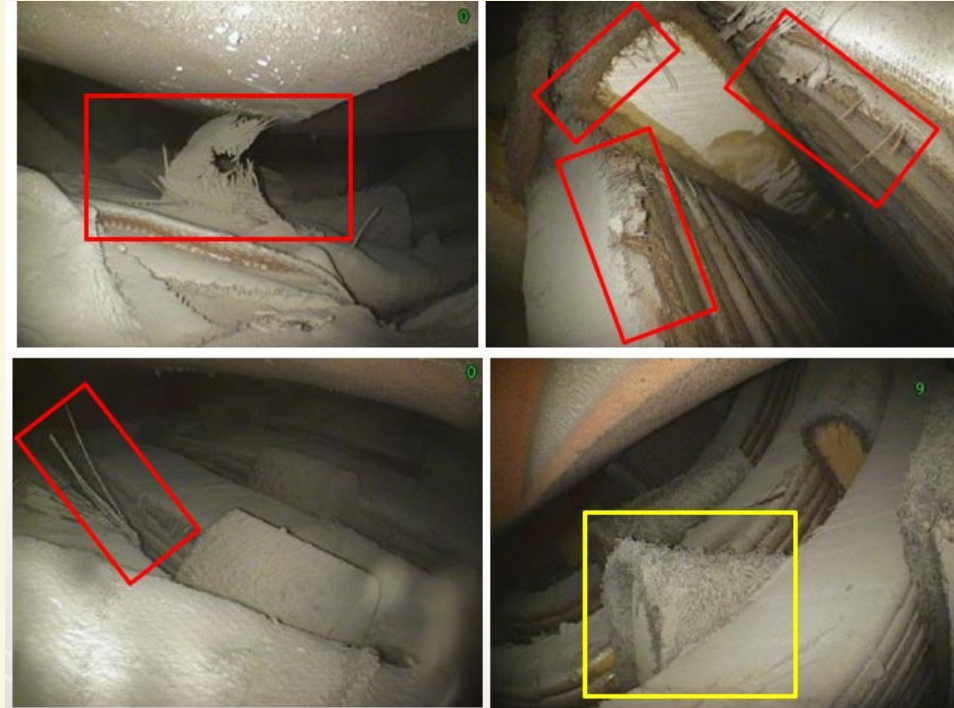
➤ 8/19/25 ➤



SCS AND JSS GENERATOR REWINDS

- Rotors last rewound 34 years ago for SC1 and SC2, original for JS1 and JS2 (52 years)
- Stators are all original for all four generators (52-53 years)
- Increased starts and operating hours in recent years
- Known degraded conditions and stator temperatures on one generator causing summer derate

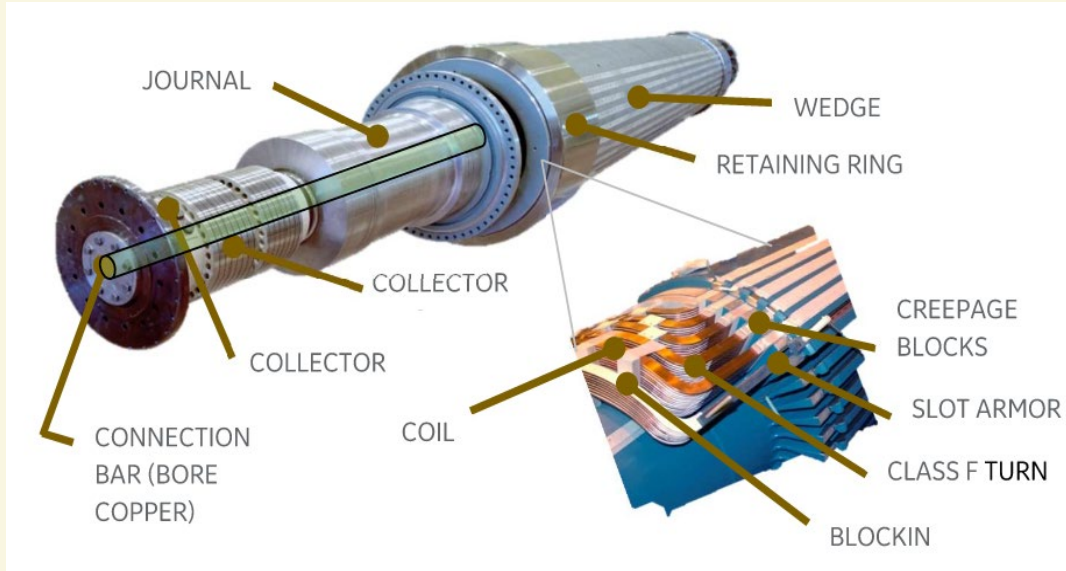
SC2 Annual Gross Generation



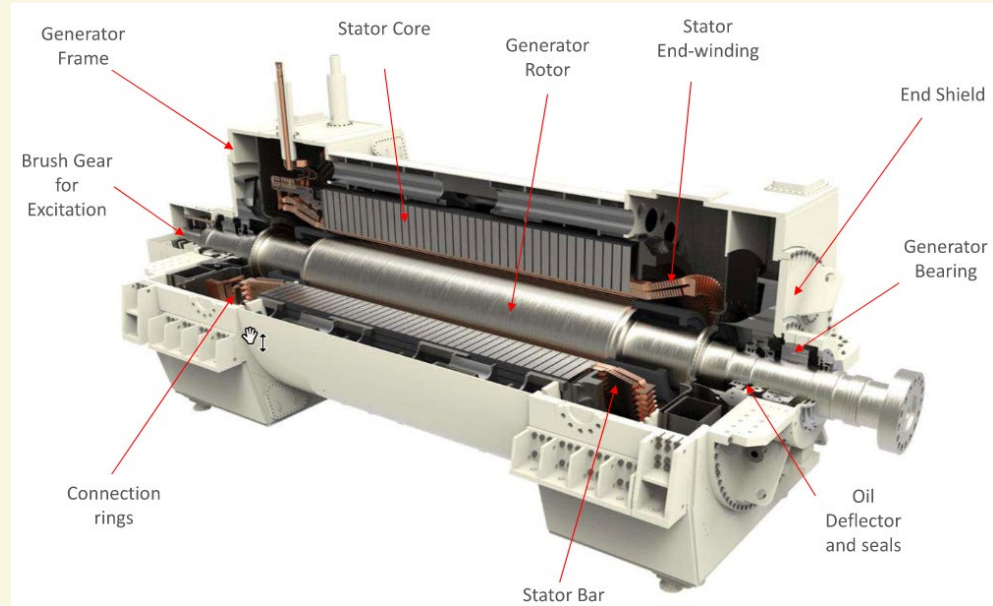
Boxes indicate areas of degradation

REWINDING THE ROTOR AND STATOR

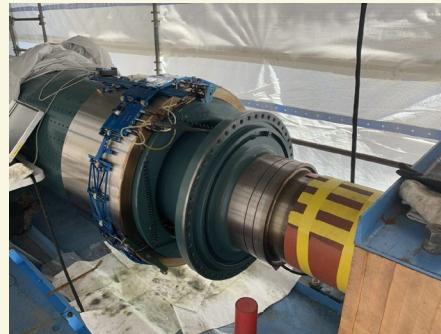
- Scope includes rewinding the rotor and stator. Also replacing retaining rings which have a known material deficiency issue that has been monitored for cracking



Generator Rotor



Generator Stator



Replace 18-5 Retaining Rings