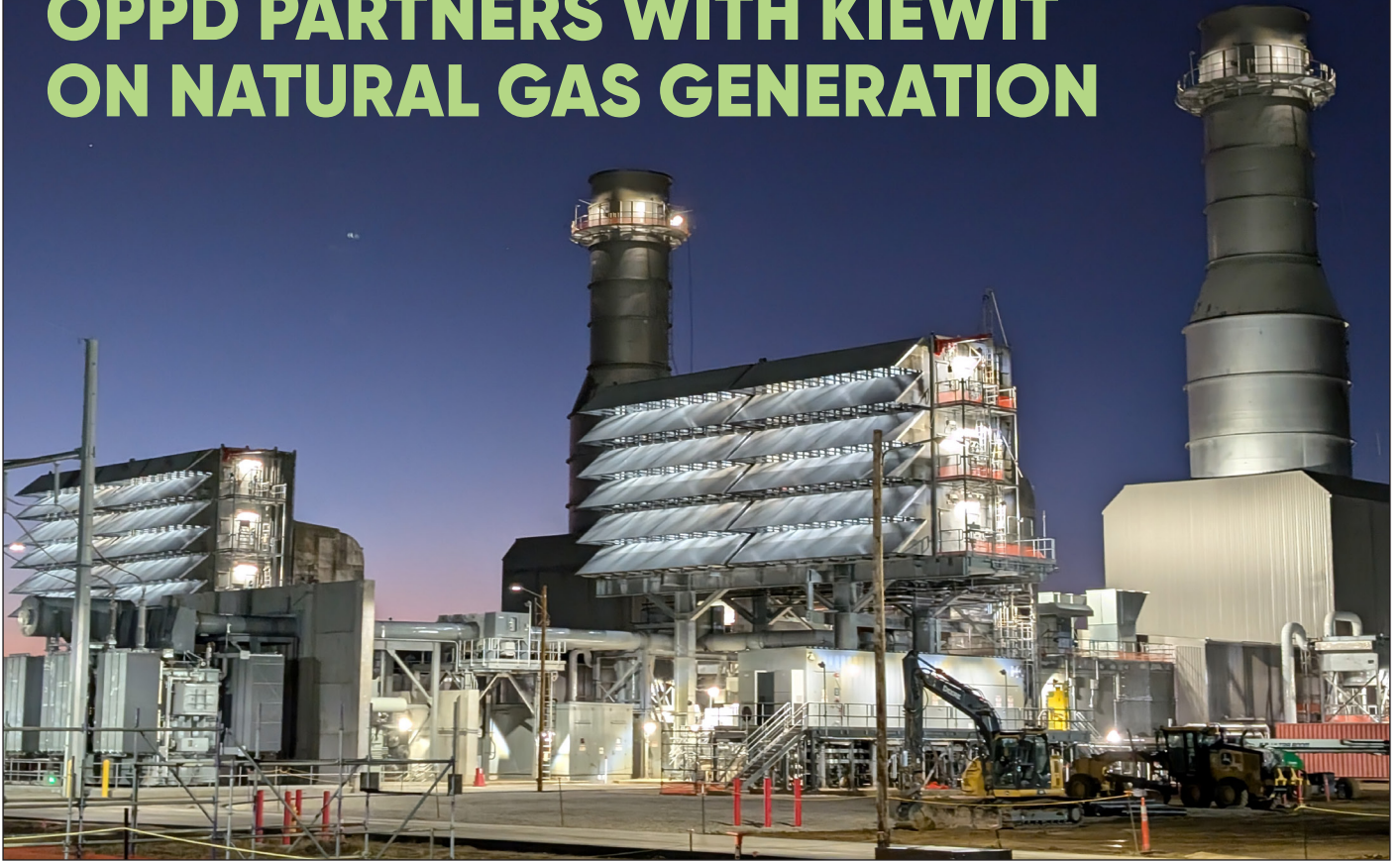


BOOSTING RELIABILITY: OPPD PARTNERS WITH KIEWIT ON NATURAL GAS GENERATION



OPPD has partnered with Kiewit Corporation, an Omaha-based construction and engineering firm, to add new natural gas generation and upgrade two existing natural gas turbines.

The agreement paves the way for three new natural gas units at OPPD's Cass County Station and one additional unit at Turtle Creek Station in Sarpy County.

Each unit can generate up to 225

megawatts (MW) of electricity and spool up quickly to help respond to grid and load demand as needed.

The natural gas stations are critical for winter reliability and when demand is at its highest.

The combination of renewables, storage and natural gas is the most economical way to satisfy system reliability and compliance.

Kiewit's power division will also help OPPD convert two natural gas

units at Cass County Station to dual fuel generators, allowing them to run on either natural gas or fuel oil as a backup. Being able to use multiple fuels gives OPPD more flexibility with its operations.

Combined, the new generation turbines at Turtle Creek and Cass County Stations will generate around 900 MW once all work is complete - roughly the peak summer load of the city of Lincoln.

APRIL BOARD MEETINGS

All-committee meeting: Tuesday, Apr. 15 (see oppd.com/BoardMeeting for details). Regular board meeting: Thursday, Apr. 17, 5 p.m. (see oppd.com/BoardMeeting for details). Hearing-impaired call 531-226-3208, 72 hours prior to request an interpreter. Agendas posted and meetings viewable on oppd.com/BoardMeeting.

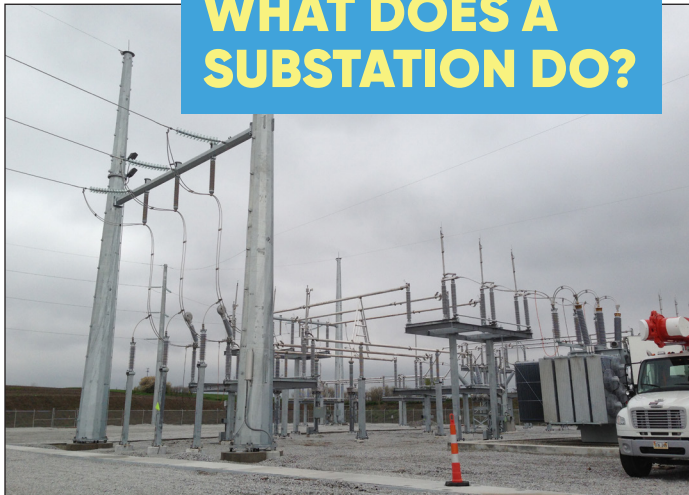
OPPD HONORED FOR MUTUAL AID WORK

OPPD has received a commendation from the American Public Power Association for its mutual aid work in Orlando after Hurricane Milton. OPPD is part of APPA's mutual aid network, which coordinates with utilities and authorities during widespread power outages. Sixteen OPPD employees spent three days in Orlando in October, working with the Orlando Utilities Commission (OUC) to help restore service

to about 83,400 OUC customers. The mutual aid team's work in Orlando capped off a journey that started Sept. 28 when the team left to help Appalachian Power restore power in rural West Virginia following Hurricane Helene. That hurricane left devastating damage across the southeast after making landfall in Florida on Sept. 26. Nearly 4 million electric customers in the region lost power.



WHAT DOES A SUBSTATION DO?



Between OPPD's generating stations and your home is a big, gray, industrial-looking facility with many vital jobs.

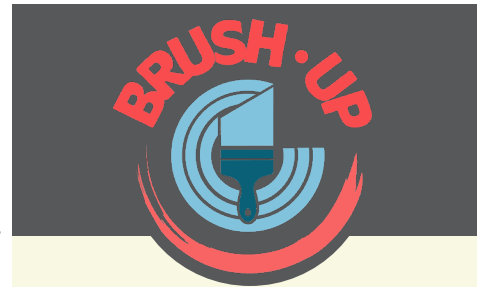
Substations help ensure the safe, efficient flow of electricity throughout eastern Nebraska. OPPD operates about 130 of the estimated 55,000 substations nationwide. Substations help "step up" and "step down" the voltage in power lines so that current can travel efficiently through transmission lines and the local distribution lines that connect

Control Center. If relays detect a problem, such as a short-circuit or overload, they engage the substation breakers to interrupt the flow of electricity and isolate the problem. That reroutes power to minimize the area and duration of any outages.

As always, substations are designed with safety in mind. Equipment in substations can pose a deadly shock risk to anyone who isn't properly trained and equipped with protective gear.

to your home. Substations date all the way back to the late 1800s, but modern models can do a lot more than their predecessors.

Today's substations collect information from the grid and share it remotely with OPPD's Energy



Is your house in need of a fresh coat of exterior paint? Are you a homeowner aged 60 or older residing in Douglas or Sarpy Counties? If so, please consider applying to participate in Project Houseworks' Brush Up event. To apply, please contact Amanda at amanda@projecthouseworks.org, (402) 965-9201, or visit projecthouseworks.org for more information. **Please note that space is limited and certain restrictions apply.**

Project Houseworks is a nonprofit dedicated to enhancing lives and strengthening communities by preserving quality, affordable housing.

7" x 2.5" AD SPACE AVAILABLE IN 2025 Proceeds benefit EAP. For details, please email gpschulte@oppd.com.

Proceeds from the sale of advertising space in Outlets are donated to OPPD's Energy Assistance Program. An advertisement in Outlets does not constitute an endorsement by OPPD. For information about this space, call 402-536-4131.