

# President's Report

October 17, 2024



# September 2024 Baseload Generation

- Nebraska City Unit 1 – Capacity Factor: 69.2%
- Nebraska City Unit 2 – Capacity Factor: 49.5%
- North Omaha Unit 4 – Capacity Factor: 63.7%
- North Omaha Unit 5 – Capacity Factor: 0%

# September 2024 Balancing Generation

- Cass County – Capacity Factor: 10.2%
- Jones Street – Capacity Factor: 1.3%
- Sarpy County – Capacity Factor: 6.1%
- North Omaha Unit 1 – Capacity Factor: 0%
- North Omaha Unit 2 – Capacity Factor: 4.2%
- North Omaha Unit 3 – Capacity Factor: 11.1%

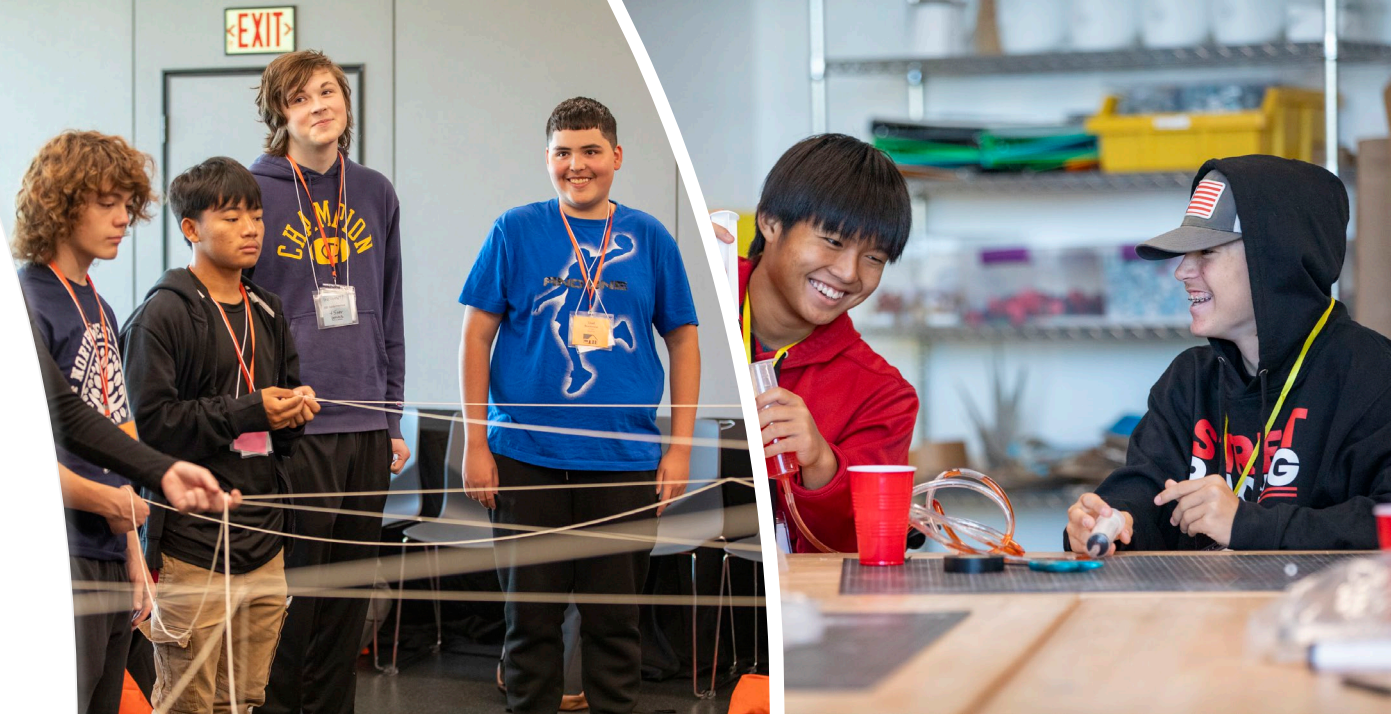
# September 2024 Renewables

- Capacity Factor for Renewables is 46.8%
- Capacity Factor for Community Solar is 25.2%
- Capacity Factor for Platteview Solar is 26.2%
- Capacity Factor for Wind is 44.0%



# Annual Youth Power Summit

- 126 STEM Students
- 6 OPS High Schools
- Breakout Sessions Focused on Grid Reliability, Distribution and Sustainability
- Careers in Energy Panel



# Energy Efficiency Assistance Program (EEAP)

- Energy Efficiency Assistance Program has been expanded to include Multi-family units (up to 8).
  - OPPD has served 220 homes since launching the program.
- Program covers up to \$2,000 in energy efficiency improvement projects to help make an increased impact on utility bills
  - Improvements may include windows, insulation, duct sealing, doors, appliances, lightbulbs, etc.
- Updated webpage and program materials



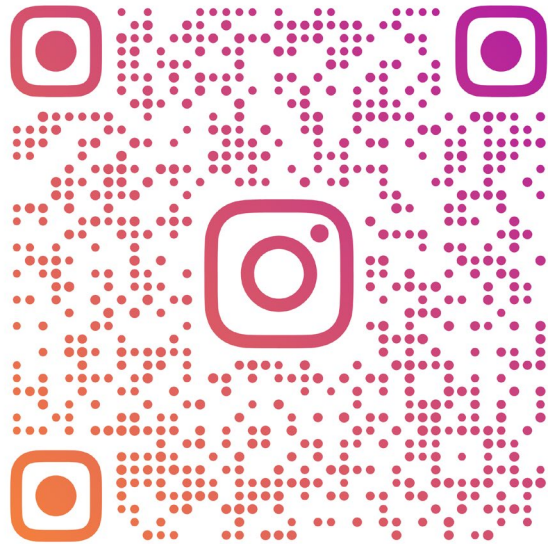
**Energy  
Efficiency  
Assistance  
Program**

[oppd.com/EEAP](http://oppd.com/EEAP)

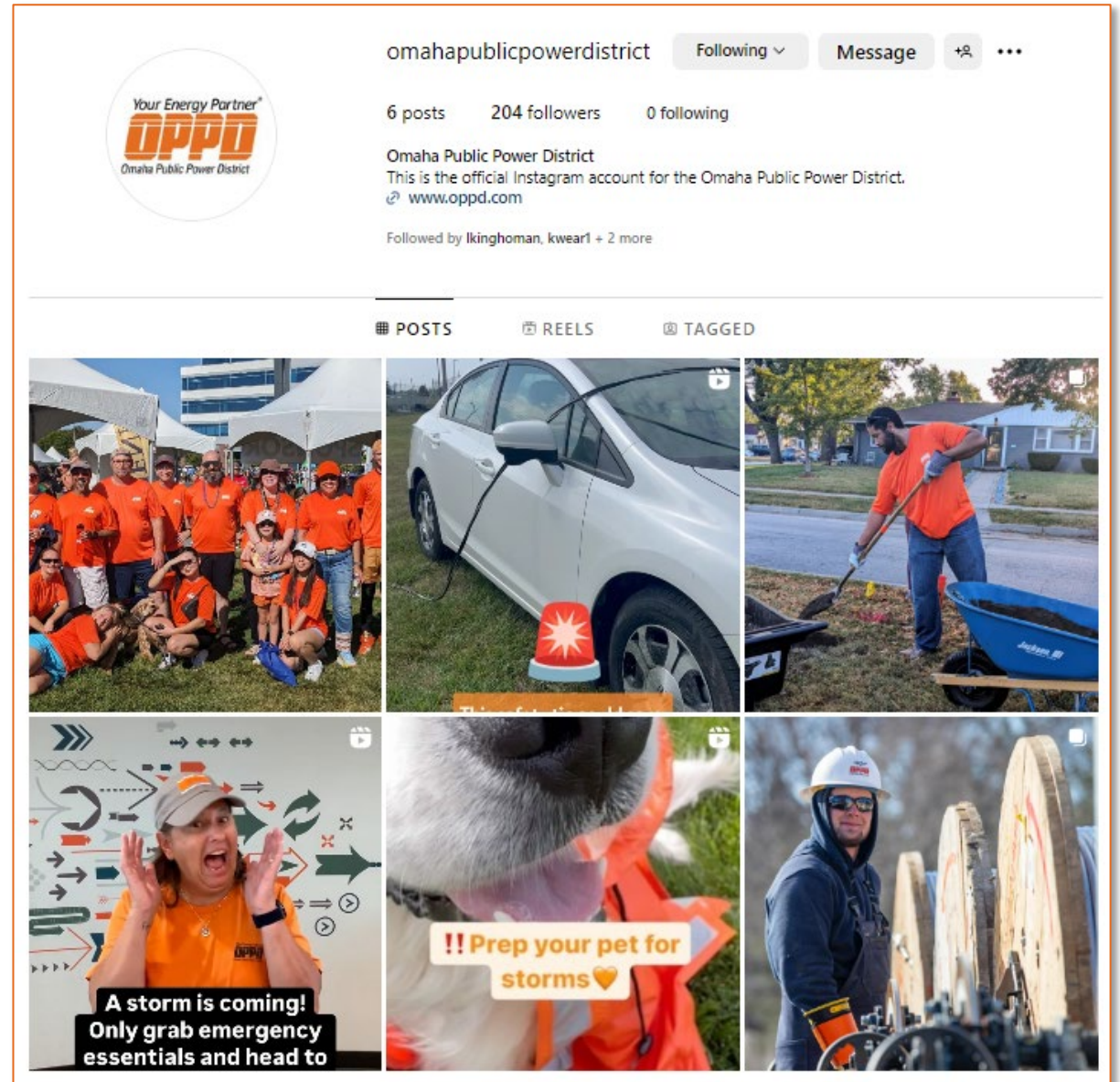


# OPPD is now on Instagram!

SCAN ME TO FOLLOW



OMAHAPUBLICPOWERDISTRICT



# Omaha Out of the Darkness Walk





# United Way Day of Caring





# Rock the Block





# Passion to Serve





# The Environment & Open Space Award 2024



*The Environment & Open Space Award recognizes an individual, group, organization, or business that has worked to preserve or enhance the metro's natural setting, park system, or open spaces.*

## **Nominees:**

- **Eric Williams** | Papio-Missouri River Natural Resources District
- **La Vista Central Park & Amphitheater** | City of La Vista, City+Ventures, RDG Planning & Design
- **Skate Ribbon at Heartland of America Park** | MECA, OJB Landscape Architecture, Kiewit Infrastructure, HDR
- **Verdis Group**



# In Memoriam

Remembering those we lost

**Larry McGrew**

Lineman

May 16, 1951

