



Advanced Metering Infrastructure (AMI) Ecosystem Program Update

David Whisinnand, Sr. Director Digital Transformation
All Committee Meeting
August 13, 2024

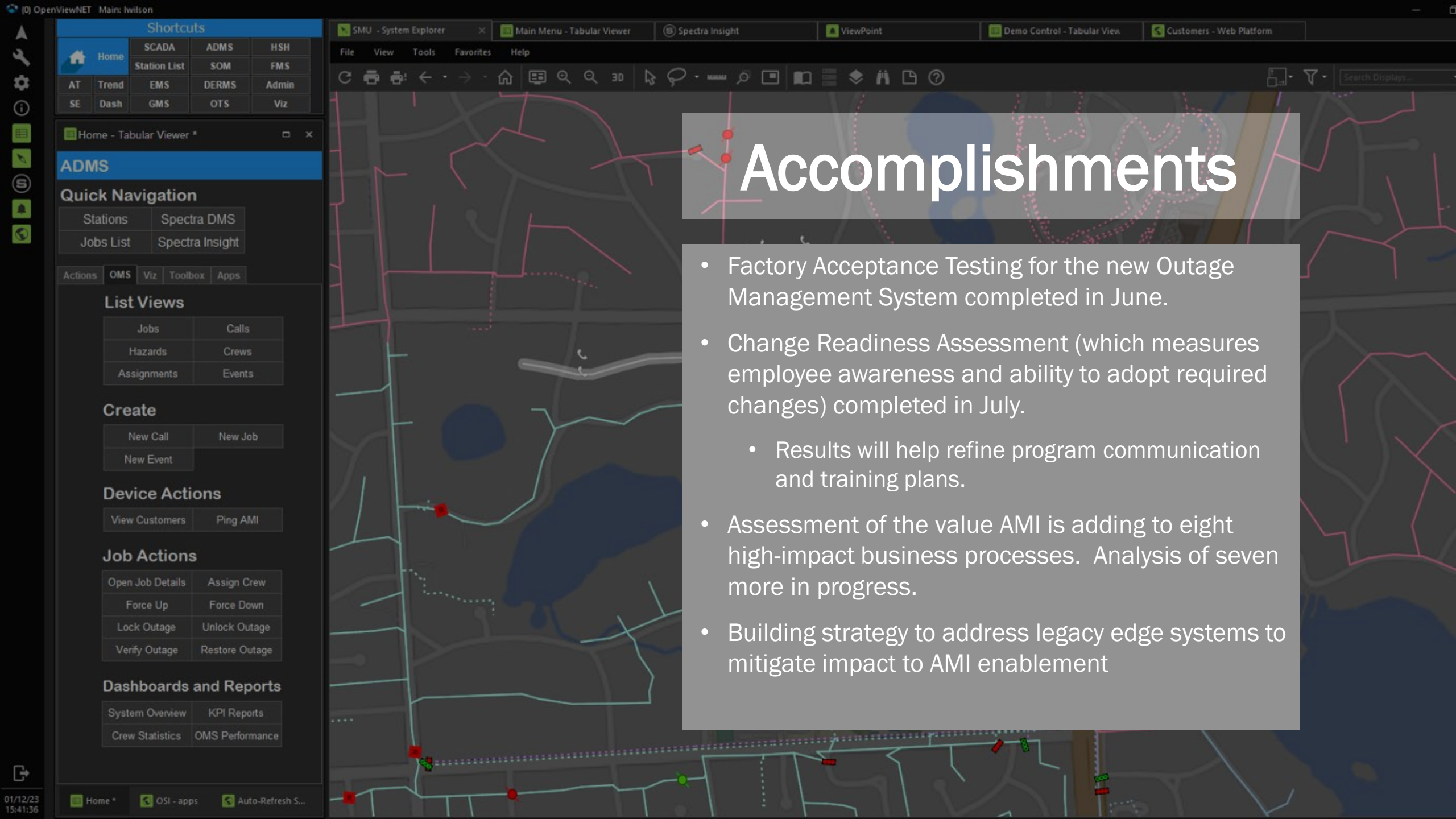


Agenda

- Program Highlights and Accomplishments
- Project Spotlight – Geographic Info System (GIS)
- AMI Ecosystem Program Broad Benefits
- Upcoming Activities and Next Steps



OPPD AMI
Meter Farm



Shortcuts				
Home	SCADA	ADMS	HSH	
AT	Trend	Station List	SOM	FMS
SE	Dash	EMS	DERMS	Admin
		GMS	OTS	Viz

Home - Tabular Viewer *

ADMS

Quick Navigation

Stations	Spectra DMS
Jobs List	Spectra Insight

Actions OMS Viz Toolbox Apps

List Views

Jobs	Calls
Hazards	Crews
Assignments	Events

Create

New Call	New Job
New Event	

Device Actions

View Customers	Ping AMI
----------------	----------

Job Actions

Open Job Details	Assign Crew
Force Up	Force Down
Lock Outage	Unlock Outage
Verify Outage	Restore Outage

Dashboards and Reports

System Overview	KPI Reports
Crew Statistics	OMS Performance

Accomplishments

- Factory Acceptance Testing for the new Outage Management System completed in June.
- Change Readiness Assessment (which measures employee awareness and ability to adopt required changes) completed in July.
 - Results will help refine program communication and training plans.
- Assessment of the value AMI is adding to eight high-impact business processes. Analysis of seven more in progress.
- Building strategy to address legacy edge systems to mitigate impact to AMI enablement

Beyond AMI

Program is having broad impacts on how OPPD builds, plans and executes strategies

LEARNINGS BENEFIT ENTIRE ORGANIZATION

- Matured organizational change management, including engaging front line in design efforts
- Enhanced project management framework, including integrated scheduling and more proactively managing systemic dependency and risks
- Deepened business process design and value analysis
- Set new standards for paperless workflow
- Implemented cloud technology and cybersecurity
- Enhanced leadership acumen around coordinating multiple strategic partners and resourcing for strategic execution of large programs

Project Spotlight: GIS

Replaces existing applications with Esri's industry-leading ArcGIS.

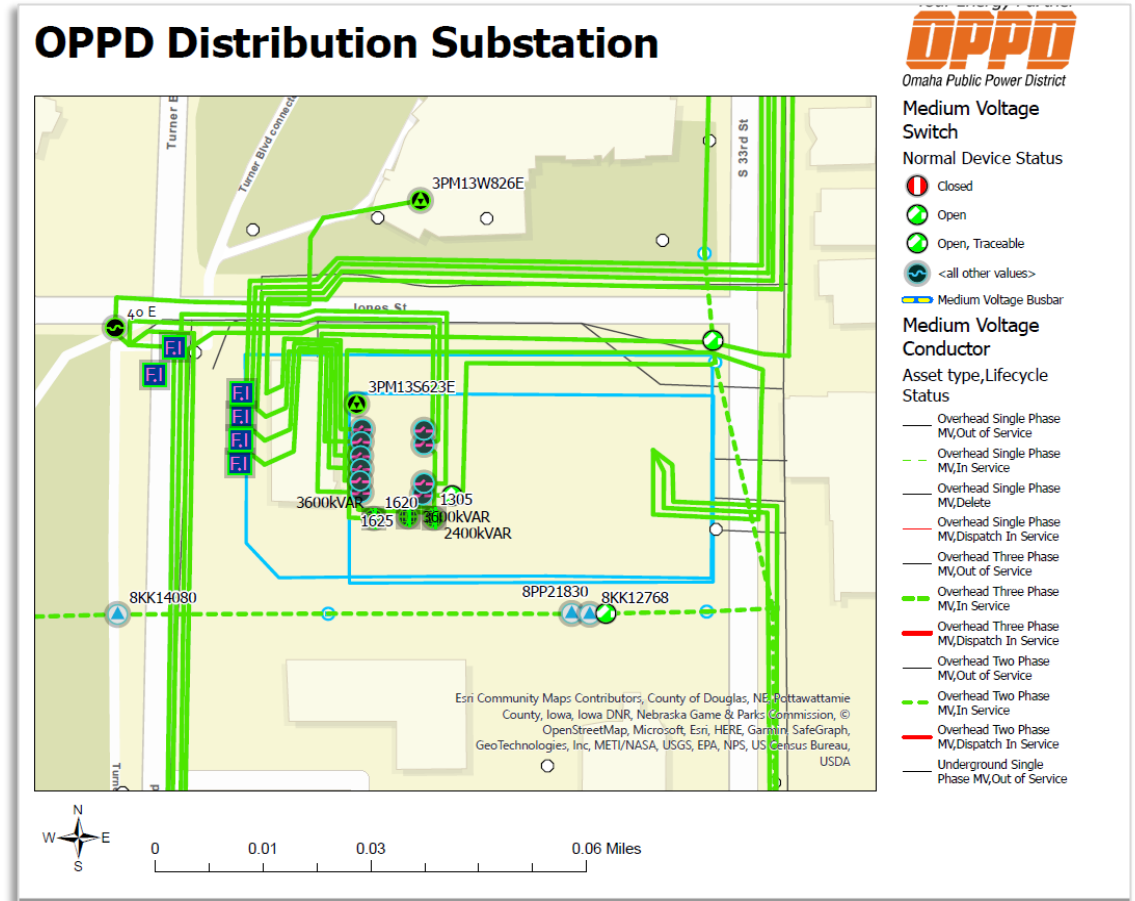
WHAT CAN WE EXPECT AT THE MVP GO-LIVE IN 2025?

- Pinpoint map accuracy
- Subscription-based service for up-to-date background maps
- Aligned symbology between GIS and Outage Management System (OMS); enabling better communication between system operators and field workers
- Dynamic scaling to allow for a better viewing experience
- Field feedback (redlining) about incorrect information managed through Field Service Management (FSM) Network connectivity tracking and tracing capabilities
- Browser-based interface provides read-only access to viewers

NOTE: GIS has gone live for a small number of users as part of the soft deployment.

PLANNED FUTURE CAPABILITIES

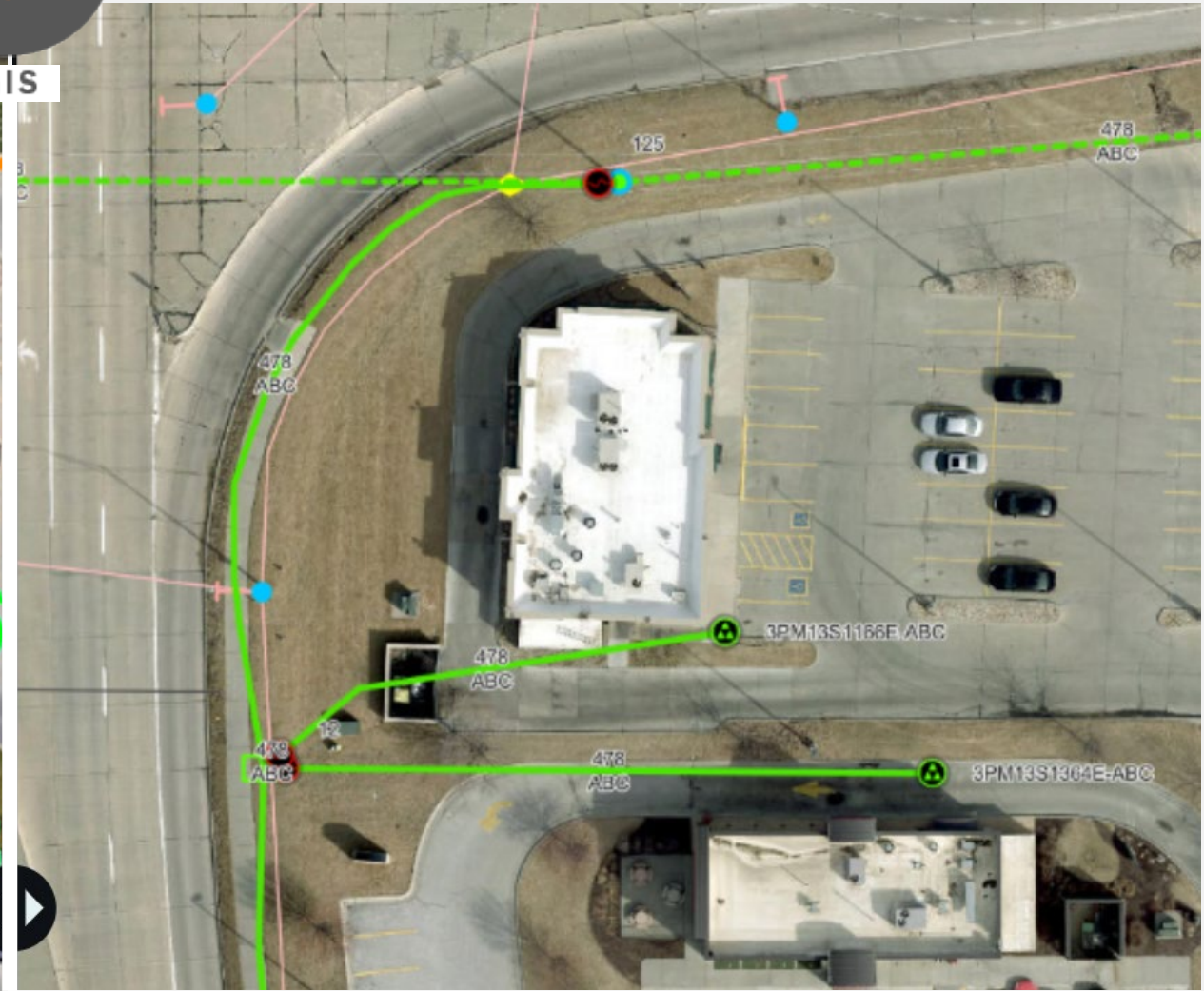
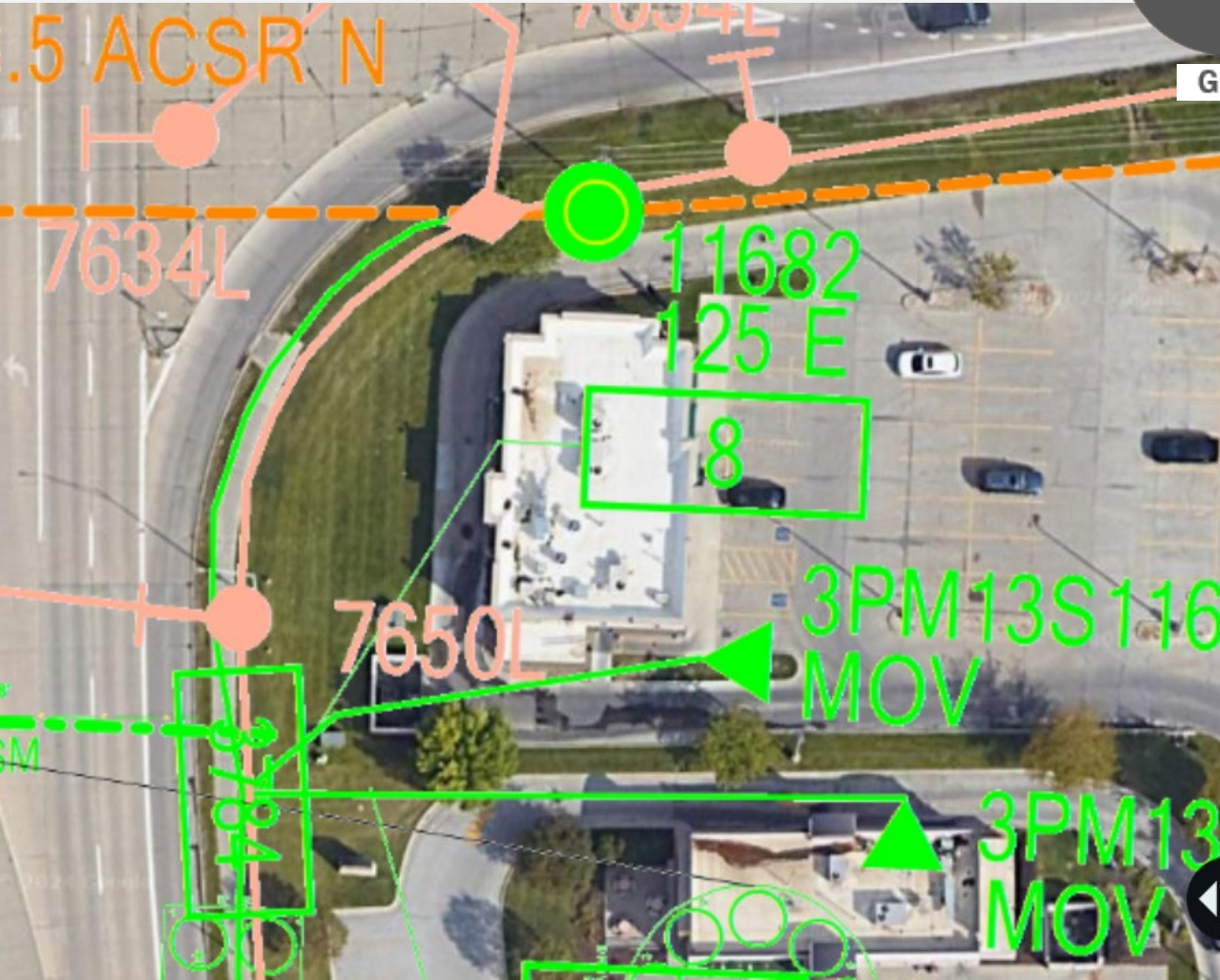
- As a foundational building block, ArcGIS can support new GIS growth, such as fiber optics network management and facilities management
- Expansion to transmission lines, substations, buildings, and OPPD property is being explored



GTECH



ESRI'S ARCGIS





Upcoming Activities

Q3 FOCUS: TRAINING DEVELOPMENT, INTEGRATION TESTS

- System and integration testing for projects in progress or beginning soon
- End-to-end testing of AMI Head-end System, Meter Data Management System, Customer Care & Billing begins this fall
- Training development planned in Q3 2024 across the program
- Pre-soft launch testing planned for Q1 2025
 - A limited number of AMI meters will be installed at OPPD facilities and a small number of employee homes
 - Effort will test technology and customer communications

