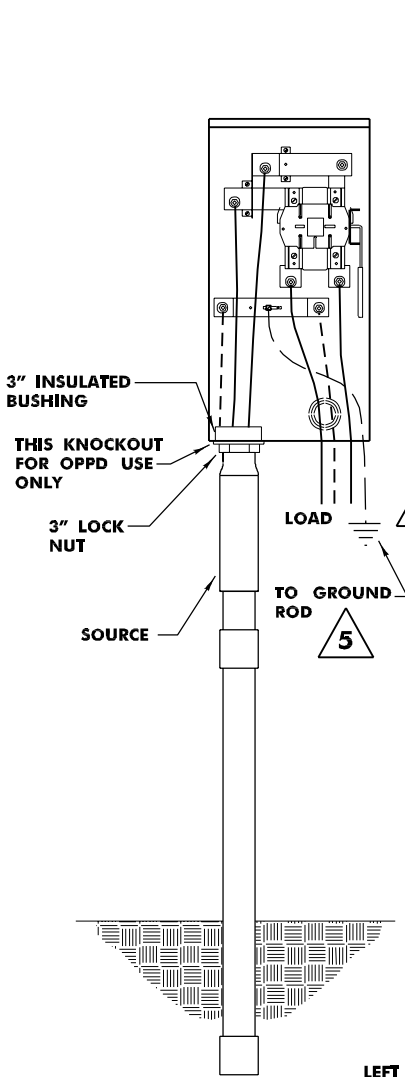


# SURFACE TYPE METER SOCKET

120/240 VOLT 3 WIRE 320 AMPERE UNDERGROUND SERVICE  
"RESIDENTIAL SERVICE ONLY"

7.05.2



**NOTES:**

TERMINALS FOR MAXIMUM 500 KCMIL OR PARALLEL 350 KCMIL COPPER OR ALUMINUM CONDUCTOR.

PATH FOR SERVICE CONDUCTORS MUST BE CLEAR OF OBSTRUCTIONS AND AT FINAL GRADE BEFORE INSTALLATION OF SERVICE.

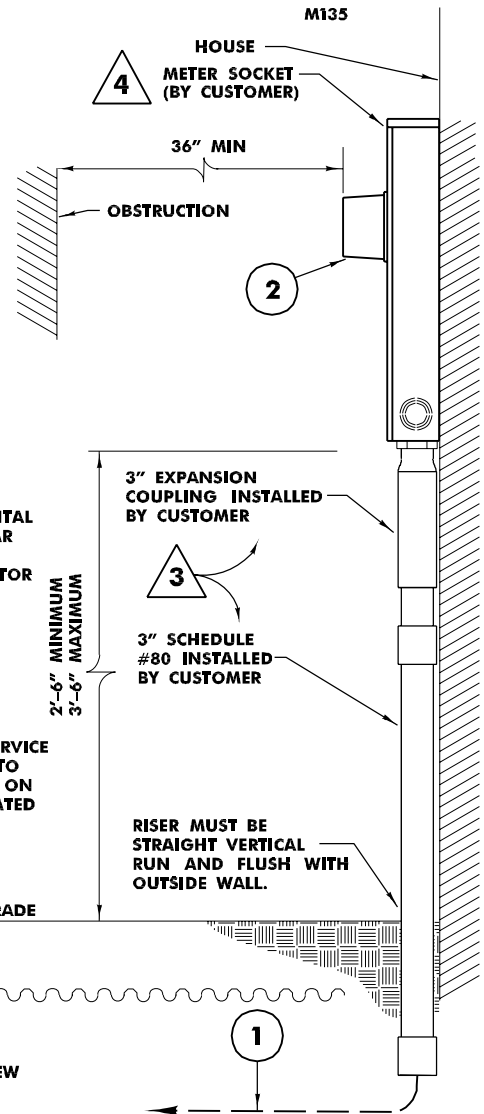
AFTER ENTRANCE EQUIPMENT IS INSTALLED CALL ACCOUNT SERVICES AT 536-4155 OR OPPD'S AREA OFFICE FOR CABLE INSTALLATION.

150 FT MAXIMUM RUN.

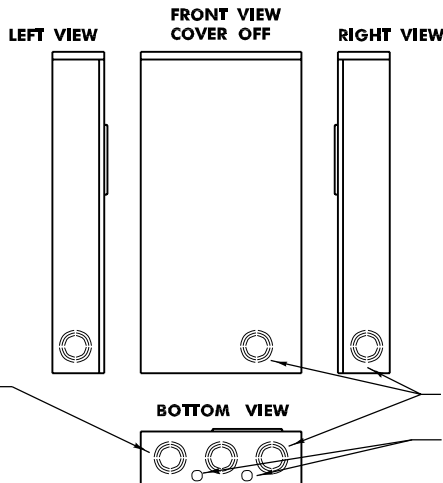
A GROUND ROD (NEC SUPPLEMENTAL GROUND) MUST BE INSTALLED NEAR THE METER SOCKET WITH AN EQUIPMENT GROUNDING CONDUCTOR RUNNING FROM THE GROUND ROD TO THE GROUNDING LUG PROVIDED IN THE METER SOCKET.

SOURCE AND LOAD CONDUIT CANNOT BE INTERCHANGED.

FOR HOMES CONVERTING FROM OVERHEAD TO UNDERGROUND SERVICE CALL ESD AT AREA OFFICE PRIOR TO INSTALLATION FOR INSTRUCTIONS ON DUCT INSTALLATION AND ASSOCIATED FEES.



**KNOCKOUT LOCATION**



3" MAX KNOCKOUTS FOR OPPD'S CABLE

CONTRACTOR MUST USE THE KNOCKOUTS DESCRIBED BELOW FOR THE LINE AND LOAD CONDUCTORS. DO NOT USE ANY OTHER KNOCKOUT OR DRILL ANY OTHER HOLES IN THE METER SOCKET. KNOCKOUT LOCATIONS ON DRAWING ARE APPROXIMATE AND NOT DRAWN TO SCALE.

3" MAX KNOCKOUTS FOR CONTRACTOR'S LOAD CONDUCTORS.

KNOCKOUTS FOR CONTRACTOR'S EQUIPMENT GROUNDING.