



# President's Report

February 16, 2023



# January Baseload Generation

- Nebraska City Unit 1 – Capacity Factor: 68.1%
- Nebraska City Unit 2 – Capacity Factor: 72.9%
- North Omaha Unit 4 – Capacity Factor: 56.7%
- North Omaha Unit 5 – Capacity Factor: 52.4%

# January Balancing Generation

- Cass County – Capacity Factor 0%
- Jones Street – Capacity Factor 1.1%
- North Omaha Unit 1 – Capacity Factor 0%
- North Omaha Unit 2 – Capacity Factor 0%
- North Omaha Unit 3 – Capacity Factor 0%
- Sarpy County – Capacity Factor 3%

# January Renewables

- Renewable energy contributed 32.8% of OPPD's retail energy sales
- Wind capacity factor of 43%
- Capacity Factor for Community Solar 9.2%

# Energy Education Program Expansion



- Expanded to all Middle Schools and High Schools in OPPD's Service Territory
- Teacher Workshop in November 2022 was open to ALL grade levels (in-person)
- 300 students are on deck for 2023 through 14 classes scheduled in February and March
- 2023's first Teacher Workshop: March 28<sup>th</sup>

## Primary Topics

- Learn the math and physics behind wind energy
- Replicate learnings

Wind Energy



- Learn how the process works with desktop solar panels
- Test different variables

Solar Photovoltaic



- Explore the school building as a system
- Mock energy audit

Energy Efficiency



# Honor Our Community

## 16th Annual Run & Walk for Warmth

### Registration is open!

When: March 4

Where: Aksarben Village and a virtual option; you choose when and where to participate

Cost: \$40 – 5-mile, \$35 – 5k, \$30 – untimed run/walk

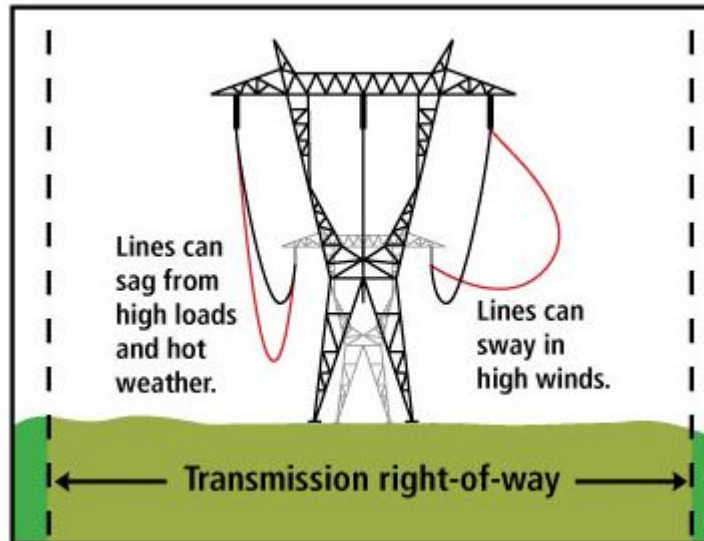
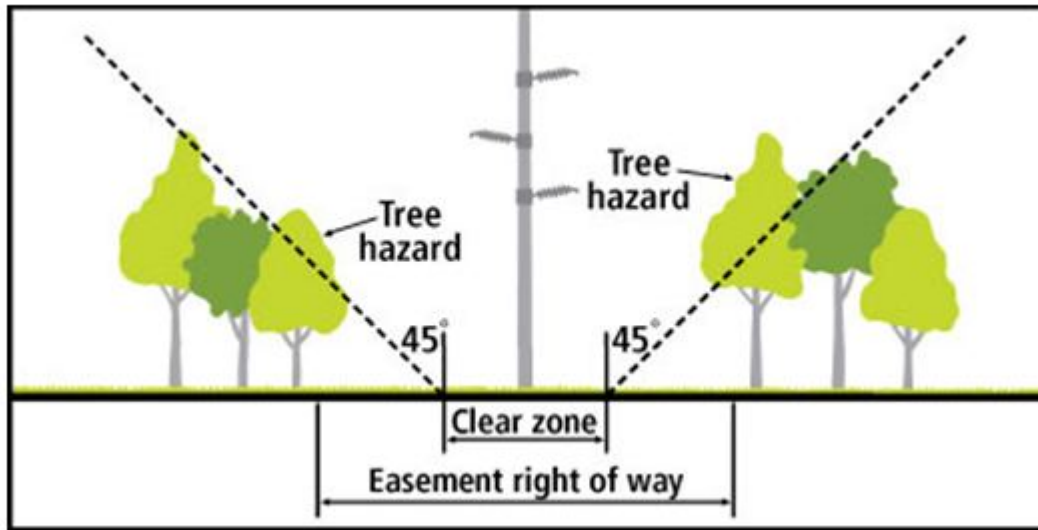
Register: [HeatTheStreetsOmaha.com](https://HeatTheStreetsOmaha.com)



**100%** of fund the raised go to energy assistance programs!

# Transmission Basics

- OPPD operates and maintains more than 1,300 miles of high voltage transmission lines within our 13 county service territory.
- Occasionally, Southwest Power Pool (SPP) finds it necessary for OPPD to build new or rebuild old transmission lines due to generation additions, load growth or reliability needs.
- High voltage transmission lines are dangerous. They are designed by engineers to industry codes and standards to keep them safely away from the general public.
- Permanent easements are procured under the line in order to protect the transmission lines and general public from planting a tree or building a structure that could cause a safety issue.



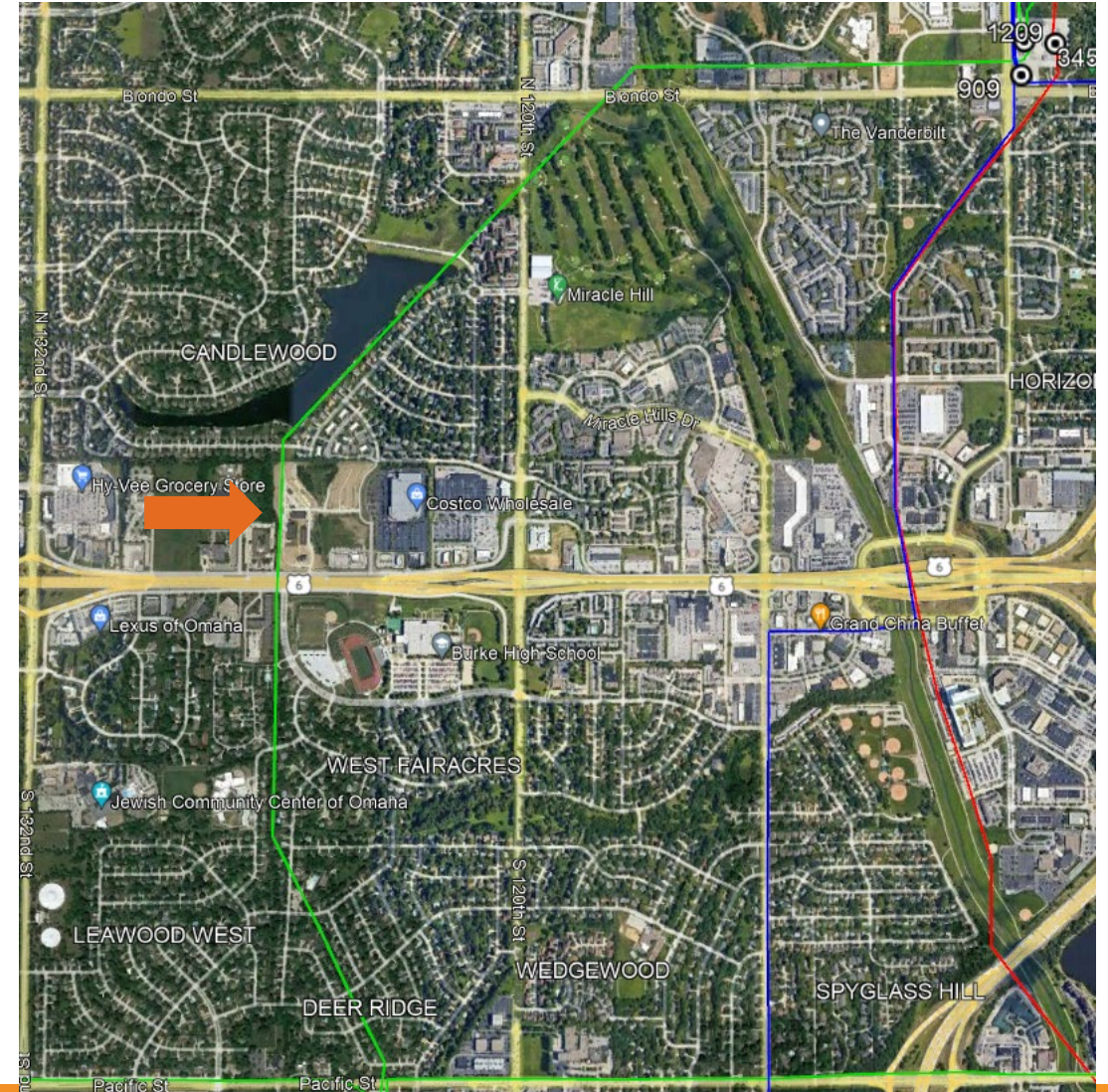
# Transmission Reliability Project 108<sup>th</sup> & Blondo to 123<sup>rd</sup> & Pacific

- Scope

- SPP and OPPD reliability Rebuild Project
- Double Circuit 161kV rebuild from 108<sup>th</sup> & Blondo to 123<sup>rd</sup> & Pacific
- ~3 miles in length
  - Re-establish 1950's easement corridor
  - Clear trees from easement area
  - Rebuild to modern design using steel monopoles vs. existing lattice towers

- Key Dates

- Outreach began: January 2023
- Tree removal began: February 2023
- Tree Removal Completion: April 2023
  - Some removal may extend beyond April 2023, with support from Migratory Bird experts
- Line Rebuild Completion: March 2024





# Tree Removal and Trimming

- ~7.5 acres of canopy area or ~500 trees needs removed
- Re-establish a clear transmission ROW to allow for a safe line rebuild and establish a baseline for Vegetation Management by Forestry.
- Any tree over 10' in height within the easement is being removed.
- OPPD Land Management to work with the 116 homeowners on replacement shrubs and damages.



# In Memoriam

Remembering those we lost

**Christopher J. Merrill**

**Lineman**

**February 23, 1990**

